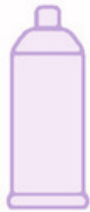


HIGH GLOSS PAINT

care guide



Wipe down using OZ polish cleaner
Avoid sharp objects abruptly
touching the piece (use felt pads
under objects)
Do not place HOT objects directly
on your piece

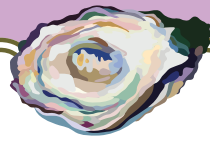


Clean up spills immediately using a
damp towel – wipe down until
completely dry



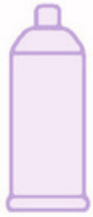
To touch up small paint chips if they
occur– shop local SW/BM stores to
locate paint colors
To hire OCC to fix any
damages/chips – please email
contact@shopoystercreekstudios.com

We love lacquer for its effortless ability to cross between traditional and modern. It works on virtually any style of furniture – and in any décor. Just like any piece of furniture that is painted, scratching and nicking can occur if objects abruptly touch the product. Eating utensils, games, toys, and/or decorative objects such as planters, centerpieces, and trays can scratch your piece if items are not gently used. DO NOT place any hot object directly on your piece. Clean up spills on the surface immediately.



BURL WOOD

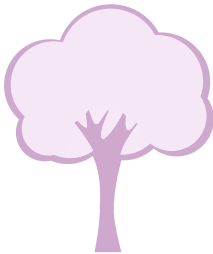
c a r e g u i d e



Wipe down using OZ polish cleaner
Do not place HOT objects directly
on your piece.

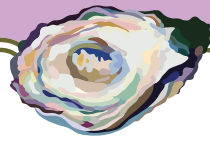


Clean up spills immediately using a
damp towel – wipe down until
completely dry.



Burl wood is a tree growth in which
the grain has grown in a unique
manner. No burlwood piece is ever
the same!

Burl is commonly found in the form of a rounded
outgrowth on a tree trunk or branch that is filled
with small knots from dormant buds. Keep in
mind that grain patterns will vary from piece to
piece adding to the uniqueness of the item.



WHITE OAK + WALNUT

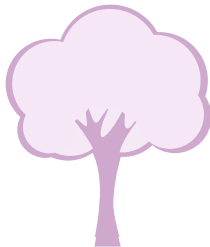
care guide



Wipe down using OZ polish cleaner
Do not place HOT objects directly
on your piece.

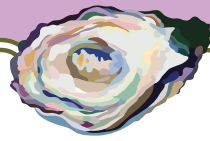


Clean up spills immediately using a
damp towel – wipe down until
completely dry



Walnut and White Oak is a grainy
hardwood. No piece is ever exactly
the same! The grain pattern of
walnut tends to be more subtle and
straight as opposed to oak, which
has more prominent swirls.

Please keep in mind that grain patterns will vary
from piece to piece adding to the uniqueness of
the item. Also, every piece of wood will take
the stain finish differently. There could be
slight variation in stain finishes from piece to
piece.



GRASSCLOTH

c a r e g u i d e



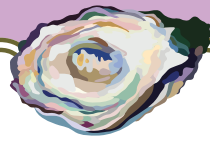
Wipe (Vinyl) Grasscloth with dry cloth to prevent dust accumulations.



To clean spills – Dab spill with a dry paper towel or soft sponge
Light stains/blemishes can be removed with a soft brush and soap and water – dry completely.



A performance vinyl grasscloth has the look and feel of a handcrafted, natural material and is virtually seamless.



ACRYLIC

c a r e g u i d e



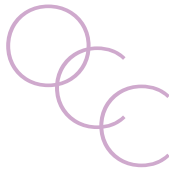
Clean surface using dishwashing liquid and warm water solution with a microfiber cloth.

Avoid sharp objects abruptly touching the piece (use felt pads under objects)

Do not place HOT objects directly on your piece



Clean up spills immediately using a damp towel – wipe down until completely dry



If scratches occur, use a commercial acrylic cleaner like Novus 7100 Plastic Polish Kit. To hire OCC to fix any damages/chips – please email contact@shopoystercreekstudios.com

Just like any acrylic piece of furniture, scratching and nicking can occur if objects abruptly touch the product. Eating utensils, games, toys, and/or decorative objects such as planters, centerpieces, and trays can scratch your piece if items are not gently used. DO NOT place a hot object directly on your piece. Clean up spills on the surface immediately.